

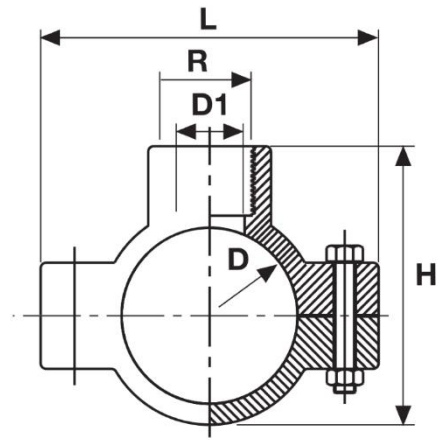
Седёлка PP

Материал: корпус и гайка - УФ-стойкий полипропилен (PP);
 зажимная часть - полиацеталь (POM);
 уплотнение - резина, пригодная для питьевой воды

Стандарты: производятся в соответствии со стандартами TS ISO 17885

Рабочее давление: 16 бар при 20°C и 10 бар при 40°C (для воды)

Производство: PIMTAŞ-Турция



Артикул	Размер	PN	Кол-во в коробке
ex529 01 25020 2	25 x 1/2"	16	350
ex529 01 32020 2	32 x 1/2"	16	300
ex529 01 32025 2	32 x 3/4"	16	300
ex529 01 32032 2	32 x 1"	16	125
ex529 01 40020 2	40 x 1/2"	16	225
ex529 01 40025 2	40 x 3/4"	16	225
ex529 01 40032 2	40 x 1"	16	200
ex529 01 50020 2	50 x 1/2"	16	180
ex529 01 50025 2	50 x 3/4"	16	160
ex529 01 50032 2	50 x 1"	16	150
ex529 01 50040 2	50 x 1 1/4"	16	40
ex529 01 50050 2	50 x 1 1/2"	16	30
ex529 01 63020 2	63 x 1/2"	16	120
ex529 01 63025 2	63 x 3/4"	16	120
ex529 01 63032 2	63 x 1"	16	110
ex529 01 63040 2	63 x 1 1/4"	16	70
ex529 01 63050 2	63 x 1 1/2"	16	45
ex529 01 75020 2	75 x 1/2"	16	90
ex529 01 75025 2	75 x 3/4"	16	90
ex529 01 75032 2	75 x 1"	16	90
ex529 01 75040 2	75 x 1 1/4"	16	50
ex529 01 75050 2	75 x 1 1/2"	16	55
ex529 01 75063 2	75 x 2"	16	45
ex529 01 90020 2	90 x 1/2"	16	80
ex529 01 90025 2	90 x 3/4"	16	70
ex529 01 90032 2	90 x 1"	16	70
ex529 01 90040 2	90 x 1 1/4"	16	50
ex529 01 90050 2	90 x 1 1/2"	16	45
ex529 01 90063 2	90 x 2"	16	45
ex529 01 11020 2	110 x 1/2"	16	60
ex559 01 11025 2	110 x 3/4"	16	60
ex529 01 11032 2	110 x 1"	16	60
ex529 01 11040 2	110 x 1 1/4"	16	40
ex529 01 11050 2	110 x 1 1/2"	16	35
ex529 01 11063 2	110 x 2"	16	50
ex529 01 12520 2	125 x 1/2"	16	50
ex529 01 12525 2	125 x 3/4"	16	44
ex529 01 12532 2	125 x 1"	16	44
ex529 01 12540 2	125 x 1 1/4"	16	40
ex529 01 12550 2	125 x 1 1/2"	16	40
ex529 01 12563 2	125 x 2"	16	40
ex529 01 14020 2	140 x 1/2"	16	12
ex529 01 14025 2	140 x 3/4"	16	20
ex529 01 14032 2	140 x 1"	16	20
ex529 01 14040 2	140 x 1 1/4"	16	20
ex529 01 14050 2	140 x 1 1/2"	16	20
ex529 01 14063 2	140 x 2"	16	20
ex529 01 16020 2	160 x 1/2"	16	15
ex529 01 16025 2	160 x 3/4"	16	16
ex529 01 16032 2	160 x 1"	16	50
ex529 01 16040 2	160 x 1 1/4"	16	16
ex529 01 16050 2	160 x 1 1/2"	16	16
ex529 01 16063 2	160 x 2"	16	24
ex529 01 20050 2	200 x 1 1/2"	16	10
ex529 01 20063 2	200 x 2"	16	10

D	R _p	D ₁	L	H
25	1/2"	16	54	52
32	1/2"	16	78	62
32	3/4"	21	78	62
32	1"	27	78	62
40	1/2"	16	80	68
40	3/4"	21	80	68
40	1"	27	80	68
50	1/2"	16	84	81
50	3/4"	21	84	81
50	1"	27	84	81
50	1 1/4"	35	84	81
50	1 1/2"	42	98	93
63	1/2"	16	98	93
63	3/4"	21	98	93
63	1"	27	98	93
63	1 1/4"	35	98	93
63	1 1/2"	42	98	93
75	1/2"	16	117	102
75	3/4"	21	117	104
75	1"	27	117	107
75	1 1/4"	35	117	109
75	1 1/2"	42	117	109
75	2"	53	117	111
90	1/2"	16	128	116
90	3/4"	21	128	118
90	1"	27	128	121
90	1 1/4"	35	128	123
90	1 1/2"	42	128	123
90	2"	53	128	126
110	1/2"	15	146	150
110	3/4"	20	146	150
110	1"	26	146	150
110	1 1/4"	35	146	150
110	1 1/2"	41	146	150
110	2"	51	146	150
125	1/2"	15	166	169
125	3/4"	20	166	169
125	1"	26	166	169
125	1 1/4"	35	166	169
125	1 1/2"	41	166	169
125	2"	50	166	169
140	1/2"	18	178	191
140	3/4"	24	178	191
140	1"	30	178	191
140	1 1/4"	38	178	191
140	1 1/2"	45	178	191
140	2"	50	178	191
160	1/2"	18	216	215
160	3/4"	24	216	215
160	1"	30	216	215
160	1 1/4"	38	216	215
160	1 1/2"	45	216	215
160	2"	50	216	215
200	1 1/2"	45	262	245
200	2"	50	262	245